



Family Runs Through it

68" x 68"



Designed, pieced, and quilted by:
Wendy Martin, Harvest Moon Quilting Company

WWW.ALLMISSOURISHOPHOP.COM

MATERIALS:

1-7/8 yards Rivers Blue

1-1/2 yards Blender Bedrock Sol

1 yard Blender Bedrock Cerulean

1 yard Blender Bedrock Marina

3/4 yard Blender Bedrock Marina, binding

4 yards Blender Bedrock Marina, backing

*BEFORE SEWING, READ ALL INSTRUCTIONS.
ALL SEAMS ARE 1/4" UNLESS OTHERWISE
STATED. CUTTING INSTRUCTIONS ARE BASED
ON 40" WOF. WOF = WIDTH OF FABRIC;
RST = RIGHT SIDES TOGETHER*

CUTTING:

From Rivers Blue Fabric:

Cut [6] — 10-1/2" × WOF strips

Subcut [36] — 10-1/2" × 6-1/2" rectangles **(A)**

From Blender Bedrock Sol Fabric:

Cut [5] — 2-1/2" × WOF strips **(B)**

Cut [8] — 4-1/2" × WOF strips, Outer Border

From Blender Bedrock Cerulean Fabric:

Cut [5] — 3-1/2" × WOF strips **(C)**

Cut [5] — 2-1/2" × WOF strips **(D)**

From Blender Bedrock Marina Fabric:

Cut [5] — 3-1/2" × WOF strips **(E)**

Cut [7] — 1-1/2" × WOF strips, Inner Border

From Blender Bedrock Marina Fabric:

Cut [8] — 2-1/2" × WOF strips, binding

Cut [2] — 72" × WOF strips, backing

BLOCK ASSEMBLY:

Strip set:

1. Sew a strip set with the following cuts as shown:

Blender Bedrock Sol **(B)**

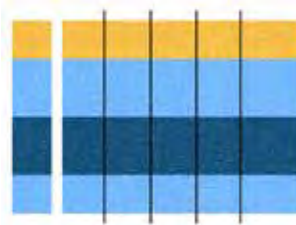
Blender Bedrock Cerulean **(C)**

Blender Bedrock Marina **(E)**

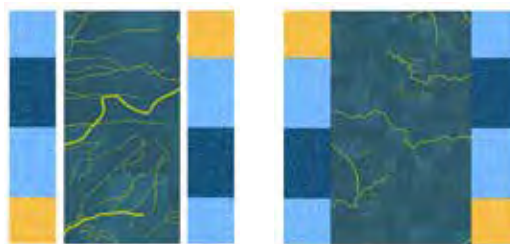
Blender Bedrock Cerulean **(D)**

2. Press all seams in one direction. Repeat to make a total of [5] strip sets.

3. Subcut into [72] 2-1/2" × 10-1/2" pieces. Label as **(BB)**

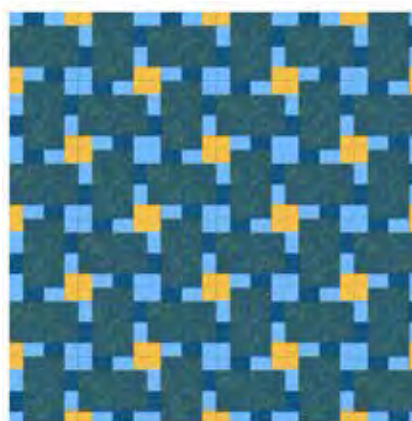


2. Sew [1] strip set unit to each of the longer edges of **(A)**. Press seams toward **(A)**. Block should measure 10-1/2" square. Make [36] blocks.



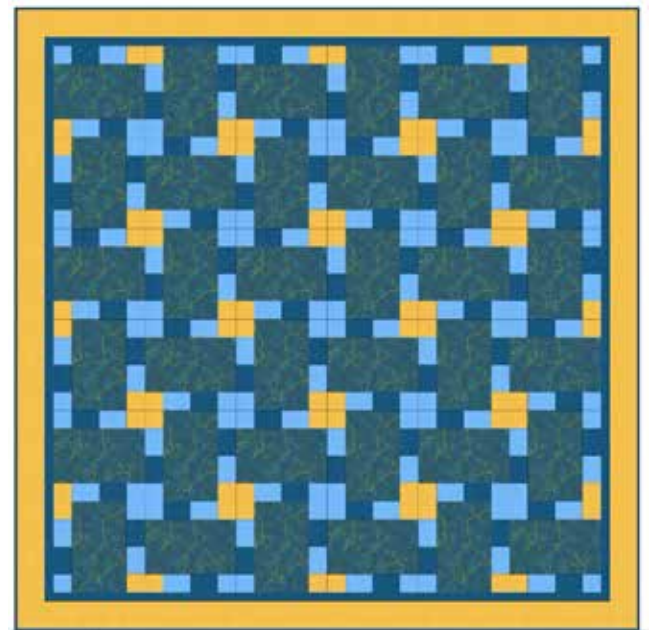
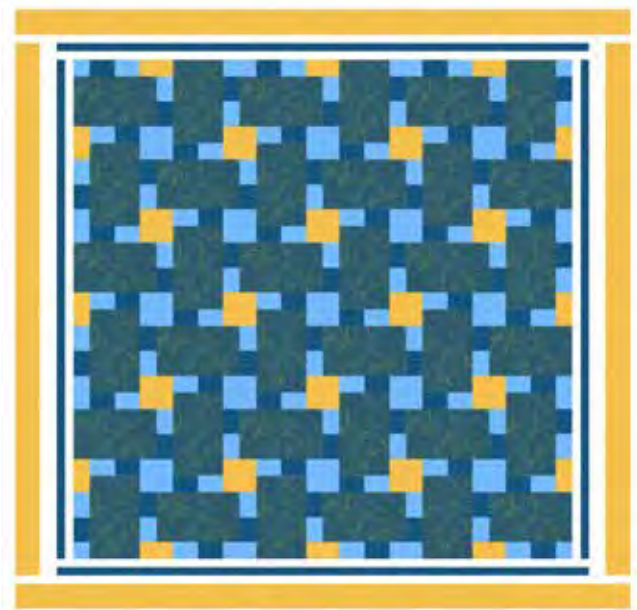
QUILT TOP ASSEMBLY:

1. Layout the blocks according to the layout below.
2. Sew blocks together in rows. Then, sew rows together.



BORDER ASSEMBLY:

1. **Inner Border:** Blender Bedrock Marina Fabric. Sew all strips RST, short end to short end, to make [1] long strip. Press all seams to one side.
2. Work with the side borders first. Measure from the top of the quilt to the bottom. Take [3] measurements. Measure a couple of inches in from each side and down the middle.
3. If your longest measurement is greater than $1/2$ " from your shortest measurement, it is better to see if you can adjust a seam or two to help get the measurements closer. Once you are happy with your measurements. Find the average of the measurements and use that number to cut [2] border strips that length.
4. Fold the border strip in half and mark center with a pin. Fold the quilt in half to find the center of the two sides, mark with a pin. With the quilt facing up, lay the border fabric face down, match up the two center marks and secure with a couple of pins. Now, match up the end of the borders with the corner of the quilt, secure with a couple of pins. Pin the border evenly across the quilt.
5. Stich each side border to the quilt. Press toward the border.
6. Repeat the measuring, pinning, and sewing steps for the top and bottom borders.
7. **Outer Border:** Blender Bedrock Sol Fabric. Follow the previous steps for the outer border.



FINISHING:

1. Layer batting between quilt top and backing.
2. Quilt as desired.
3. Add binding.
4. Label & Enjoy!

Wendy Martin



Wendy has been sewing, quilting, and crafting all her life, remembering tying quilts with both her grandmothers as a child. Quilting remains her favorite craft to this day, especially the math involved in designing. A life-long South Dakota resident, Wendy is a wife, a mother to two daughters, works as a nurse, runs a Long Arm Quilting business, and raises a large flock of sheep. In her spare time, she enjoys card making and paper crafting with her mother.